

1) True or false?

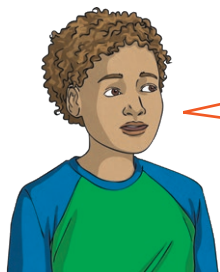
$\frac{1}{3}$ of the shape is shaded.



Explain your answer using reasoning.



2) Look at this set of shapes.



None of the shapes in my set can be represented by a unit fraction.

Do you agree with Joel?
Use reasoning to explain.



3) Ken and Rita are discussing these fractions.

Both fractions are the same because three parts are shaded in each shape.

Ken

Rita

The circle has $\frac{3}{4}$ shaded and the rectangle has $\frac{3}{5}$ shaded. If I represent both fractions as bar models, it helps me to see that they are not the same.



Who is correct?

Use a bar model to help justify your reasoning.

4) Adding 2 unit fractions never makes a whole.

Is this always, sometimes or never correct?